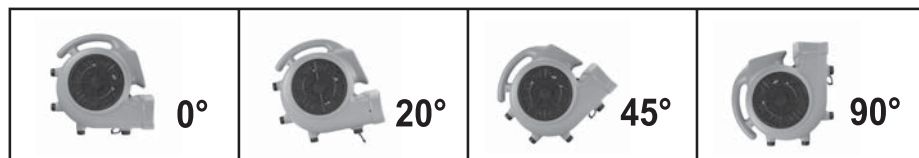


# Introduction

Master Equipment Cage Dryers are Certified Professional Level Multi Functional Cage Dryers with the efficient engineering design.

## FEATURES:

- Low 3.8 Amp draw with high velocity of 2000 CFM
- Super quiet and super lightweight
- Easy clean filter
- Easy carrying and stackable
- Easily disassembled for cleaning and servicing
- 20 foot cord with easy cord wrap design
- Safety screens on open vents
- 3 speed switch
- 4 positions (0°, 20°, 45°, 90°)



# Operation/Instructions

Blue Force Cage Dryers are durable and easy to operate, with an effective balance of static pressure and airflow.

1. Blue Force Dryers are shipped ready to be put into service. Prior to plugging the unit into the power source, inspect the unit completely for any shipping damage.
2. Plug the electrical cord into a 3-prong GFCI outlet.
3. Carefully place the Dryer unit on a stable, flat, dry surface.
4. The unit has a four position capability to aim airflow across flat surfaces or angled upward.
5. Turn switch to the desired speed and make sure it is operating correctly.
6. All Dryers in operation must be supervised at all times.

**TIMER INSTRUCTION:**  
Use the Timer to set the preferred time from 1 min to 180 min.



# Maintenance Instructions

1. Keep the Cage Dryer clean by wiping down with a damp cloth.
2. Never clean the unit with water.
3. When not in use unplug and store the Cage Dryer in a dry indoor place - out of reach of children.

# Safety Instructions

To reduce the risk of fire, electric shock, or injury to persons when using your appliance, please follow the basic safety precautions.

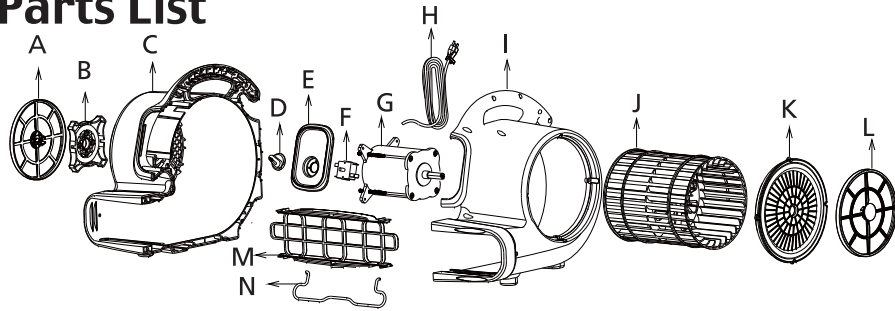
1. READ all instructions before using this appliance.
2. Use this dryer only for its intended purpose for drying dogs and cats.
3. Never unplug the dryer by pulling on the power cord. Always grasp the plug firmly and pull straight from the outlet.
4. To protect against electrical hazards, do not immerse the dryer in water or any liquid or allow water to be drawn into the air intake.
5. Do not operate the dryer in the presence of explosive fumes.
6. Closely supervise children when dryer is in use.
7. Unplug the dryer before cleaning, before making any repairs, or when dryer is not in use.
8. This dryer should be connected to a grounded power outlet with the proper electrical supply. See operating instructions.
9. Repair or replace any loose or worn parts immediately.
10. Do not operate the dryer when parts are missing or broken.
11. Do not use the dryer outdoors.
12. Do not operate the dryer if it is damaged or malfunctioning in any way. Contact PetEdge Customer Service at 800-638-5754.
13. Avoid contacting hot surfaces.
14. Do not wrap cord around motor enclosure. Continuous heat from the motor may damage cord insulation and cause electric shock.

# Troubleshooting

For any problems not listed below, contact PetEdge Customer Service at 800-638-5754

PROBLEM	POSSIBLE CAUSE	SOLUTION
Cage Dryer not running	No power input	Plug in the Cage Dryer; check circuit breaker
	Switch not turned on	Turn on switch
	Unit fan jammed	Remove material jamming fan wheel
	Intake or exhaust blocked	Turn unit off and allow to cool, then remove blockage
Cage Dryer vibrates excessively	Accumulation of dirt on fan blade	Clean Cage Dryer blade

## Parts List



- |                            |                                |
|----------------------------|--------------------------------|
| A. Filter (Motor Side)     | I. Right Housing               |
| B. Grid Cover (Motor Side) | J. Fan                         |
| C. Left Housing            | K. Grid Cover (Fan Side)       |
| D. Switch Knob             | L. Filter (Fan Side)           |
| E. Switch Plate            | M. Air Outlet Grid Cover       |
| F. Switch                  | N. Kick Stand                  |
| G. Motor                   | O. Rubber Feet (Not Shown)     |
| H. Power Cord              | P. Screws and Nuts (Not Shown) |

## Limited Warranty

This Master Equipment™ Blue Force Cage Dryer is warranted against defective material or workmanship for one year from the date of purchase. Any Master Equipment product that is determined to be defective in material or workmanship during the warranty period will be replaced without cost to the purchaser for parts or labor. Please contact PetEdge Customer Service at 1-800-638-5754 regarding any defective product. PetEdge will not be liable under this warranty for any defect, failure or malfunction of this product caused by normal wear, abuse, misuse, unauthorized adjustments or repairs. PetEdge will not be liable for any incidental or consequential damages of any type. Any implied warranty is limited to the one-year period provided in this express warranty. Some states do not allow limitations on how long an implied warranty lasts or exclusion or limitation of incidental or consequential damages, so the above limitations or exclusions may not apply to you. Warranty is void if product has been modified in any manner, repaired by anyone other than PetEdge or has been subject to unreasonable use. Warranty is valid in the United States.

Date Purchased: \_\_\_\_\_

Reorder # TP143003

Master Equipment™ Blue Force Cage Dryer

Manufactured for / Fabricado para / Fabriqué pour

© Tops Pet Products, Beverly, MA 01915

Manufactured in / Fabricado en / Fabriqué à China



# Blue Force Cage Dryers Owners Manual

