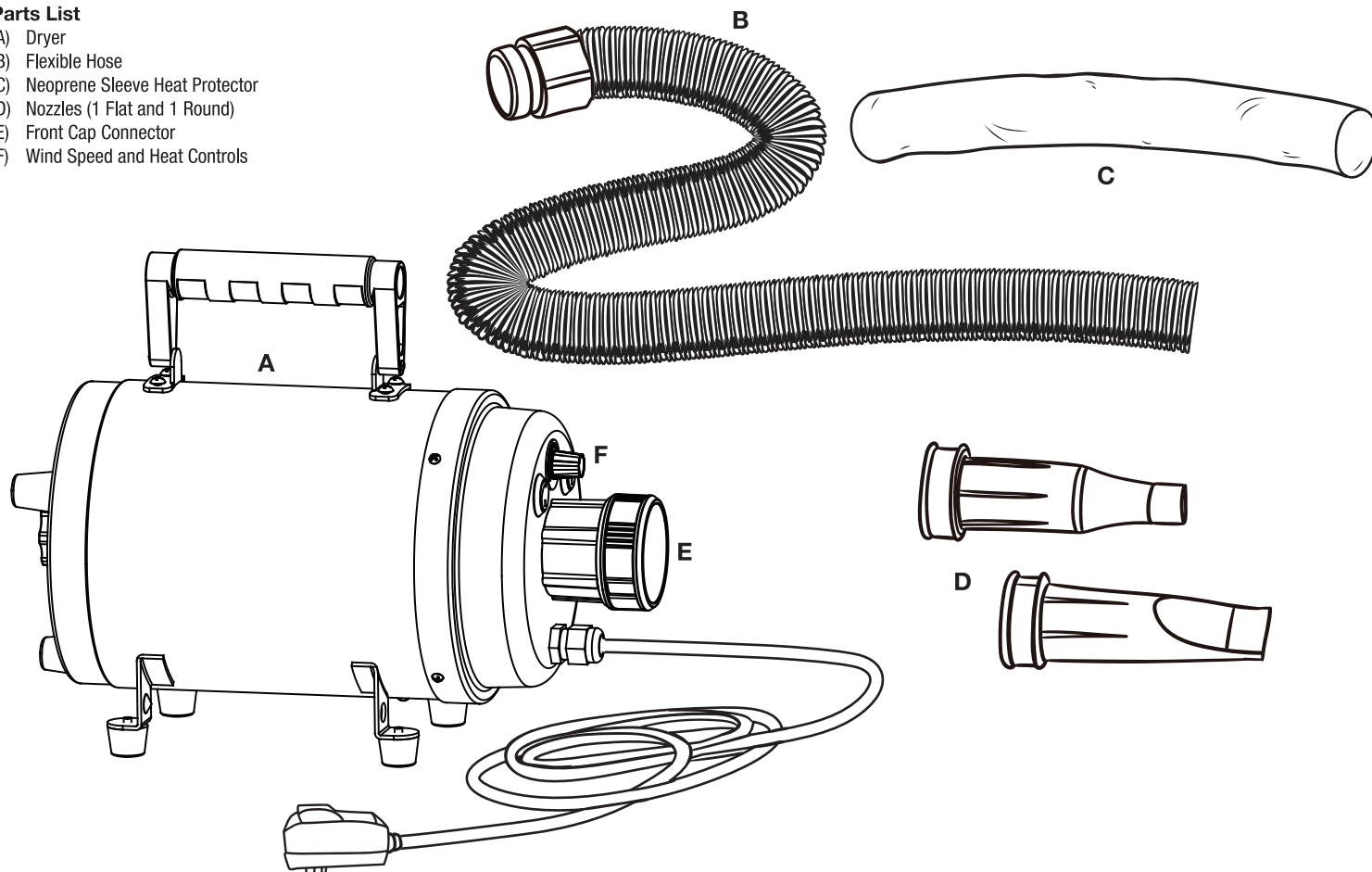


Parts List

- (A) Dryer
- (B) Flexible Hose
- (C) Neoprene Sleeve Heat Protector
- (D) Nozzles (1 Flat and 1 Round)
- (E) Front Cap Connector
- (F) Wind Speed and Heat Controls



Operation Instructions

- 1). Attach the Flexible Hose (B) to the Front Cap Connector (E).
- 2). Connect the electrical plug into the power outlet and switch the power on.
- 3). Adjust wind speed, turn on or off the heating switch and choose suitable nozzle according to your needs.
- 4). Turn the wind speed knob back to low, turn off the heating switch, and then turn off the power after use.

20 amp GFCI outlet recommended

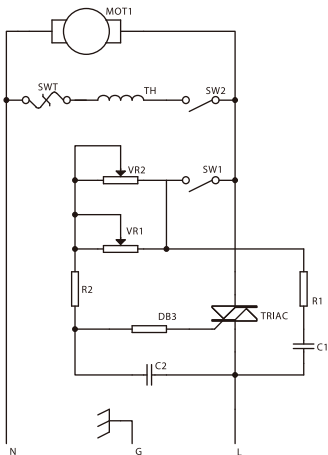
CARE INSTRUCTIONS

1. Please clean the foam filter (by washing or air blowing). Reinstall filter again when it's dry.
2. Keep the surface clean and dry, and use a dry and soft cloth to clean the surface.
3. Wet cloth with neutral detergent and wipe to remove stubborn stains and dirt.
4. Use only mild neutral detergent.
5. When the carbon brushes wear down replace the brushes following the guide line in this booklet or consult with the professionals.

SAFETY WARNING

1. Pet dryer needs a single outlet which is at least 15 amps (20 amps is recommended) and a dedicated ground wire. Please connect pet dryer with a correct outlet and do not share with other appliances.
2. Before turning on or off, please adjust the wind and temperature to the low. This can extend the life of the machine.
3. Do not insert pins or any metal objects into the machine. This will prevent electric shock and short circuiting.
4. Do not use a cloth or bag to stop the air flow and foam filter or it will do damage the machine.
5. If the machine has been used for some time and a malfunction occurs, you should ask a professional to repair it. Do not disassemble by yourself.
6. If the power cord is damaged, discontinue use and have repaired by a professional.
7. Please keep children away when you operate the machine.
8. Dropping or heavily banging or hitting the machine could damage the frame and motor.
9. People with pacemakers or heart ailments should not operate this machine.
10. Please hold the nozzle and hose firmly before turning the machine on, or the hose may wiggle and cause injury.
11. Must plug hose into the front cap connector before turning the machine on.
12. It's strictly forbidden to touch the components in the front cap connector with hand or any other objects in any situation.
13. The appliance is not intended for use by persons (including children) with reduced physical, sensory or mental capabilities, or lack of experience and knowledge, unless they have been given supervision or instruction concerning use of the appliance by a person responsible for their safety.
14. Children should be supervised to ensure that they do not play with the appliance.
15. If the power cord is damaged, discontinue use to avoid a hazzard. Have it repaired by a professional before continuing use.

CIRCUIT DIAGRAM



NOTES:

1. The parameters are tested with 2.5m long flexible hose and Φ 16mm round nozzle.
2. We may not publish formal notice in written form when the parameters changed after new improvements.
3. The manufacturing standards and testing stands subject to the manufacturer's company standard: TXPS-ALPD-0901(T)-2011.

SPECIFICATIONS

Product Name	CYCLONE	Item Number	TP9010
Rated Voltage	110V -120V	Blow Force	605g
Rated Current (110V)	15A	Maximum Wind Speed	60m/s
Maximum Power (110V)	1800W	Minimum Wind Speed	27m/s
Heating Power	600W	Noise (on back of the dryer at 0.5m)	94dbA
Maximum Temperature (Environmental Temperature at 89.6°)	125.6°	Noise (on top of the dryer at 0.5m)	83dbA
Net Weight	9.48lbs	Gross Weight	11.24lbs
Product Dimension (Flexible Hose not Included)	13.4"×6.3"×8.3"	Packing Dimension (L×W×H)	17.1"×12"×9.3"
Class	0		

LIMITED WARRANTY

This Master Equipment® PowerDri™ System Canister Dryer is warranted against defective material or workmanship for one year from the date of purchase. Any Master Equipment® product that is determined to be defective in material or workmanship during the warranty period will be replaced without cost to the purchaser for parts or labor. Please contact Boss Pet Products Customer Service at 1-800-638-5754 regarding any defective product. Boss Pet Products will not be liable under this warranty for any defect, failure or malfunction of this product caused by normal wear, abuse, misuse, unauthorized adjustments or repairs. Boss Pet Products will not be liable for any incidental or consequential damages of any type. Any implied warranty is limited to the one-year period provided in this express warranty. Some states do not allow limitations on how long an implied warranty lasts or exclusion or limitation of incidental or consequential damages, so the above limitations or exclusions may not apply to you. Warranty is void if product has been modified in any manner, repaired by anyone other than Boss Pet Products or has been subject to unreasonable use. Warranty is valid in the United States.

Date Purchase: _____

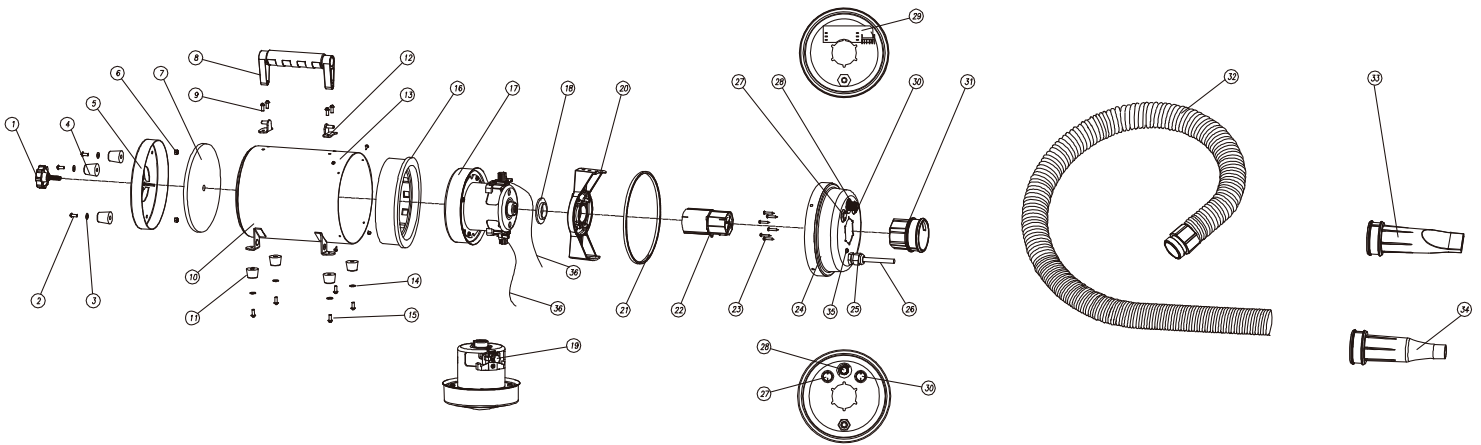


Manufactured for

© Boss Pet Products, Inc., Danvers, MA 01923
MADE IN CHINA

TP9010 17, TP9010 79, & TP9010 87
Master Equipment® PowerDri™
System Canister Dryer

STRUCTURE CHART



Remarks: The chart is only for repair parts order references, the real structure should be subject to current available product, since we may make modifications without notice in formal written form.

Serial No.	Part Name	Quantity
1	Rear Cap Fixture Knob	1
2	M4×10 Screw	3
3	Washer	3
4	Rear Cap Rubber Foot	3
5	Rear Cap	1
6	M4 Lock Nut	3
7	Foam Filter	1
8	Handle	1
9	M4×12 Screw and Nut	5
10	Short Housing	1
11	Housing Rubber Foot	4
12	Handle Set	2
13	PA3×8 Self-tapping Screw	4
14	Washer	4
15	M5×10 Screw	4
16	Vibration Absorber Ring	1
17	Motor B	1
18	Rubber Washer	1
19	Carbon Brush	2
20	Single Motor Fixture Bracket	1
21	Rubber Seal	1
22	Heating Element Assembly	1
23	PA3×16 Self-tapping Screw	6
24	Front Cap -A	1
25	PG-9 Waterproof Cable Connector	1
26	Power Cable	1
27	Heating Switch	1
28	Wind Speed Knob	1
29	PCB-A	1
30	Power Switch	1
31	Front Cap D52 Hose Connector	1
32	D52 Flexible Hose	1
33	D52 Narrow Nozzle	1
34	D52 Round Nozzle	1
35	M4×8 screw and nut	1
36	High temperature resistant silicone wire	1
	-A Brown, 0.75mm ² ×200mm	
	-B Blue, 0.75mm ² ×200mm	

CHANGING THE CARBON BRUSH

Cut off the power supply before changing the carbon brush

- Remove the retaining screws on front cap by cross screwdriver in arrow direction, and open the front cap.
- Press the clip down on the connectors of the wires to motor, unplug the wires and remove the front cap.
- Remove these three screws which fixing the motor bracket one by one.
- Lift the little iron panel up with flathead screwdriver, open the brass clip which holding the motor wire to remove the old carbon brushes.
- Put the new brushes in, and tighten the brass clip with nipper pliers.
- Twist the little iron to a certain angle to fix the carbon brush brass rear cap.