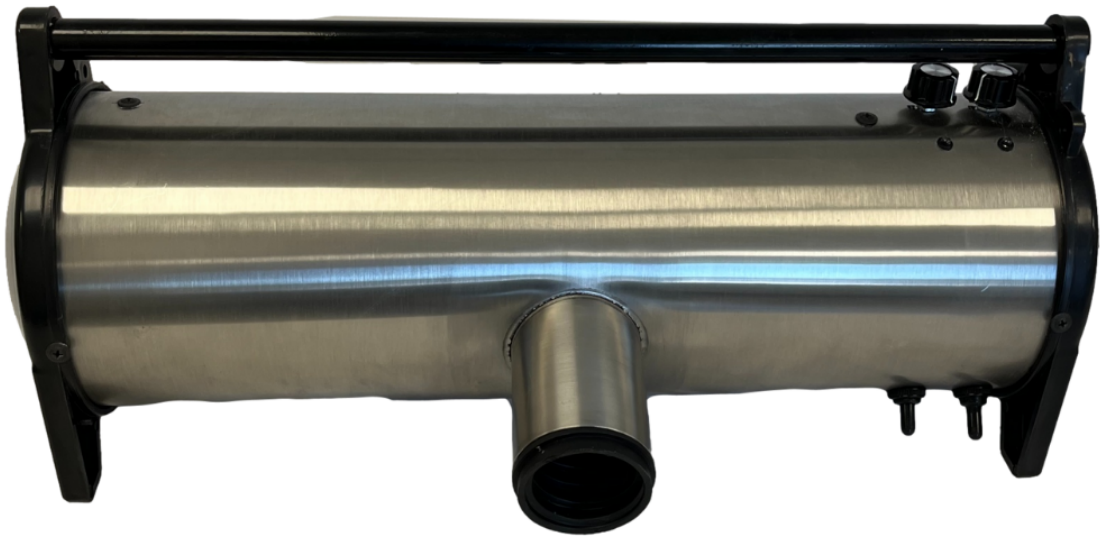




**THE GUSTYAIR FORCE PRO II  
HIGH VELOCITY DRYER  
OFFERED BY Tool Klean Inc.**



**USER GUIDE**

## PRODUCT DESCRIPTION

The GustyAir Force Pro II High Velocity Dryer is an ultra powerful and extremely quiet unit, making it a superior option for professional groomers. The GustyAir Force Pro II comes equipped with two highly efficient motors, four turbines, and four filters. The variable speed options for each motor offer convenience in drying all breeds of dogs, large and small, and all types of coats. The GustyAir Force Pro II is an innovative patent-pending design, allowing for a quieter, more powerful and highly efficient drying experience.

## PRODUCT SPECIFICATIONS

- Dual Ametek turbine motors
- Variable speed options for each motor
- Durable 304 stainless steel body
- 12 gauge industrial cord
- No built-in heating element
- Wall-mount included
- 65,000 FPM per motor
- 260 CFM capability
- Easy brush maintenance
- Dimensions: 21"L x 10"W x 9"H
- Weight: 20 Lbs
- 19 Amps
- 110 Volts
- 10 ft screw-in ultra quiet hose
- 3 screw-on hose nozzles included

## WARRANTY INFORMATION

The GustyAir Force Pro II High Velocity Dryer comes with a Limited Lifetime Warranty which includes the following details:

- Lifetime warranty on the structure
- 3 yr. warranty on the motors
- 6 mo. warranty on parts

## PRODUCT PREPARATION & OPERATION

- **IMPORTANT NOTE:** The dryer must run on a 20 amp dedicated circuit to avoid overheating.
- Remove the dryer, hose, wall mount, and accessories from the box.
- Inspect the unit to make sure the dryer, accessories, and cord are intact and undamaged.
- Set up the unit on a flat, durable surface or mount to wall (wall mount instructions included later in guide).
- Plug the unit in and test each motor with the switches on the bottom right of the unit.
- Switch directions are as follows:
  - UP = high speed
  - DOWN = low speed
  - MIDDLE = off
- Test desired velocity for each motor with the corresponding knobs on the top right of the unit.
- Attach the hose and desired nozzle to the unit by screwing in tightly.
- Operate the GustyAir Force Pro II Dryer with either one motor or two, at the desired velocity of the user.

## ACCESSORIES INCLUDED

The GustyAir Force Pro II High Velocity Dryer comes with the following accessories:

- 10 foot long screw-in ultra quiet hose
- Wall mount (hardware not included).
- 2 additional replacement filters
- 3 nozzle attachments: open, flat, and cone.

## NOZZLE ATTACHMENTS

- Open Nozzle: Recommended for small dogs, cats, or pets with long hair. Apply the air with longitudinal (up and down) movements. Do not apply air in one place for an extended period as it could damage the skin. This nozzle allows for a quieter drying experience.

## NOZZLE ATTACHMENTS

- Flat Nozzle: Recommended for dogs of all sizes with medium and short hair. It can also be used to expel water. For long-haired dogs of any size use the open nozzle.
- Cone Nozzle: Recommended for opening the coat of the dog and getting out the undercoat. Use caution with the cone nozzle as it can cause knots and tangles.

## BRUSH CHANGES & MAINTENANCE

Follow these steps to change the brushes for the GustyAir Force Pro II :

- Use a screwdriver to remove the 2 screws on the side cover of the dryer, then remove the side cover and set aside.
- Remove the 2 screws on the outside body of the dryer.
- Remove the retaining ring inside the dryer and set aside.
- Remove the black seal around the motor and set aside.
- Carefully pull the motor out of the dryer.
- Detach the wire nuts and unwind the wiring to detach the motor from the dryer fully.
- Unscrew the 2 screws holding the brush and remove the old brush.
- Replace with a new brush and screw it back in.
- Rewire and reinstall the motor, seal, and retaining ring in the same order as they were removed.
- Reinstall the side cover of the dryer

**Note:** In order to ensure a long life for the unit, store indoors in a clean, dry environment.

## TROUBLESHOOTING

- If the motor(s) is not running, check to make sure the correct switch is on, the outlet is intact and not faulty, and the cord is intact and undamaged.
- If the product overheats, be sure that it is running on a 20 amp dedicated circuit.
- If the air flow is weak, there may be obstructed vents/inlets. Turn off and unplug the unit, clean the vents/inlets, and turn the unit back on to test it.
- If the brushes have become worn down and are not working to an optimal level, open the unit and change the brushes (Please refer to the brush changes/maintenance section of the user guide for further instructions).
- If there are any additional issues that are not listed here and need to be resolved, contact us at the phone/email provided on the back of this user guide.

## WALL MOUNT GUIDE

- Some installation/additional hardware is required including two 5/16" anchors and two screws for hanging.
- It is recommended to use a 5/16" drill bit to drill holes for the anchors on a level line 19.25" apart (vertically or horizontally).
- Please use the corresponding drill bit needed for drilling into whatever material you plan to install the wall mount into.
- If drilling into a material that is not concrete/brick, it is best to use a wooden beam for support.
- After measuring and drilling the holes, place the anchors fully into the wall and screw the wall mount into the anchors.
- The GustyAir Force Pro II can be attached to walls, ceilings, and under worktables.



## SAFETY GUIDELINES

- The GustyAir Force Pro II should be operated by adults only. Do not allow children in the vicinity while operating the dryer.
- The GustyAir Force Pro II should always be monitored when in use.
- The GustyAir Force Pro II MUST run on a 20 amp dedicated circuit to avoid overheating.
- Read instructions fully before operating the dryer.
- Make sure to have a firm grip on the hose before turning on the unit as the airflow will cause it to move violently.
- Do not leave objects within reach of the airflow.
- Do not point the airflow toward objects that can fall such as lamps.
- Do not direct the airflow toward the eyes, nose, or mouth.
- Use only the recommended instructions provided in this manual while operating the unit.
- Unplug the unit when servicing and/or not in use.
- Disconnect the dryer from an outlet by the plug NOT the cord.
- Refrain from using the unit around water or with wet hands or shoes.
- DO NOT expose to rain or water.
- Do not use worn/damaged cord or extension cord.
- Disconnect electrical supply prior to servicing.
- Install the unit in area away from dust, water, and other liquids
- Clean the filters regularly to prevent overheating.
- Do not block air inlet or exhaust.
- Do not use with a power strip.

EPA/FCC Compliant

Tool Klean EPA Registered #  
94836

EPA Establishment #94836-NY-1

Tool Klean is proud to be an  
American company!  
Our Products are US tested,  
assembled, packaged, and  
labeled according to strict EPA  
regulations.

Learn more about  
Tool Klean Products  
[www.toolklean.com](http://www.toolklean.com)  
[info@toolklean.com](mailto:info@toolklean.com)  
800-706-1677

Tool Klean, Inc.  
191 Newtown Rd.  
Plainview, NY 11803

PLEASE CONTACT TECHNICAL SUPPORT FOR WARRANTY OR SERVICE  
ISSUES. EMAIL [INFO@TOOLKLEAN.COM](mailto:INFO@TOOLKLEAN.COM) / PHONE 800-706-1677

