

Tools Required (Not Included):

Hammer or Mallet • Phillips-Head Screwdriver • Flathead Screwdriver (or other pointed tool)



- Using a Phillips-Head screwdriver, loosen the screws from the electrical control box cover. Remove the cover.



- Unplug the cord that connects the electrical control box to the electric lift mechanism.

- With the help of one to two people, lay the grooming table/tub on its back—and not on either one of its sides.

Please note: This is a precautionary step to ensure your safety. You risk injury if you service the table/tub while it remains standing in the upright position because the suspended table/tub, without a power source to lock it in place, could drop on you. Please take precautions to avoid injuries.



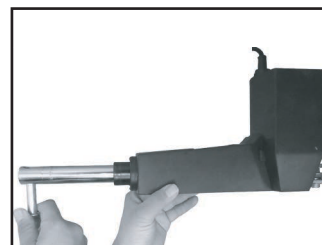
- Use a flathead screwdriver (or other pointed tool) to pull out the snap rings from the locking pins on the electric lift mechanism.



- Use a hammer or mallet to tap out the two locking pins from the base and top of the electric lift mechanism.



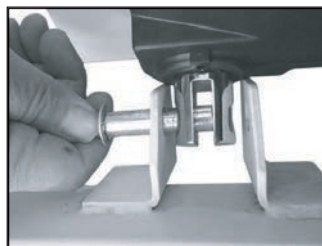
- Remove the old electric lift mechanism.
- Insert the new electric lift mechanism into the grooming facility.



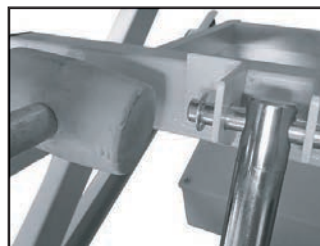
- Insert one of the locking pins into the attachment hole at the top of the electric lift shaft and rotate counterclockwise to extend, until the tip reaches the mounting brackets on the table/tub frame.



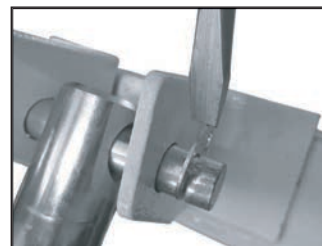
- Remove the locking pin, slide the top of the electric lift shaft into place between the mounting brackets, and reinsert the locking pin through the mounting brackets and the top of the electric lift shaft.



- Slide the other locking pin through the mounting brackets at the base of the electric lift mechanism.



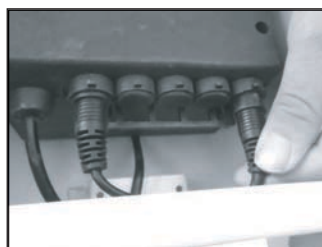
- Using a hammer, tap both locking pins into place.



- Using a flathead screwdriver (or other pointed tool), replace the snap rings to secure the locking pins.



- Slide the cord from the new electric lift mechanism through the rubber gasket on the electrical control box.



- Plug the cord from the new electric lift mechanism into the correct port on the electrical control box.



- Place the cover back onto the electrical control box. Using a Phillips-Head screwdriver, replace the screws and tighten to secure in place.