



TP8296 47 87 • Master Equipment Radiance II LED Electric Grooming Table



| Grooming Table Configuration | | |
|------------------------------|-------------------------|-----|
| No. | Item Part | Qty |
| ① | Table Frame | 1 |
| ② | Glass Top | 1 |
| ③ | Linear Actuator | 1 |
| ④ | Transformer | 1 |
| ⑤ | Foot Pedals | 2 |
| ⑥ | Lighting Control Remote | 1 |
| ⑦ | Magnetic Remote Holder | 1 |
| ⑧ | Electric & USB Ports | 1 |
| ⑨ | Locking Drawer | 1 |
| ⑩ | LED Controller | 1 |
| ⑪ | Tool Hooks | 3 |



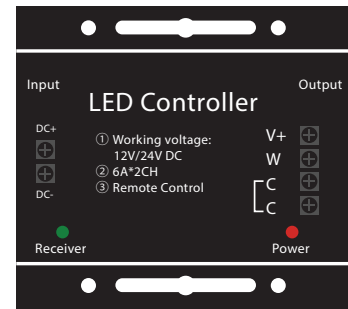
②



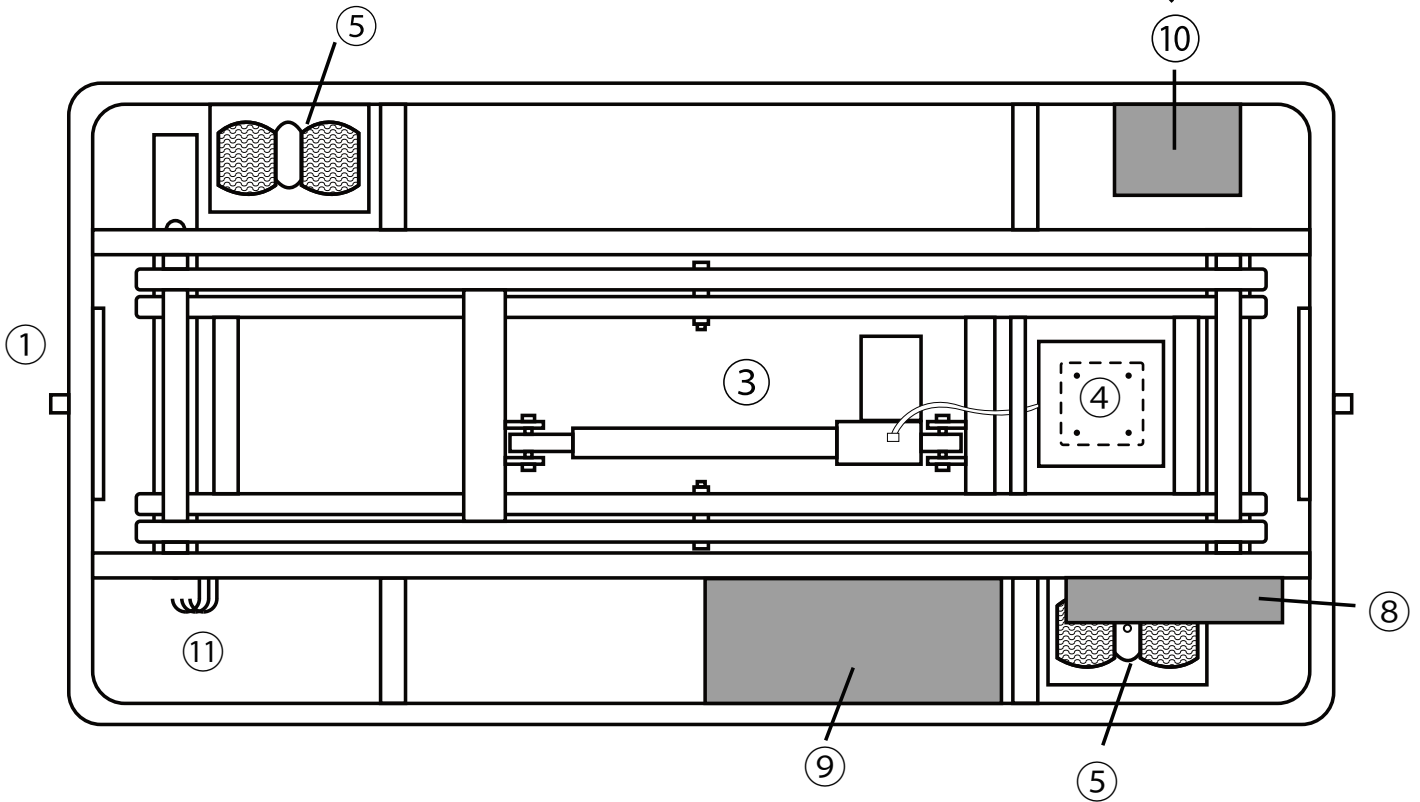
⑥

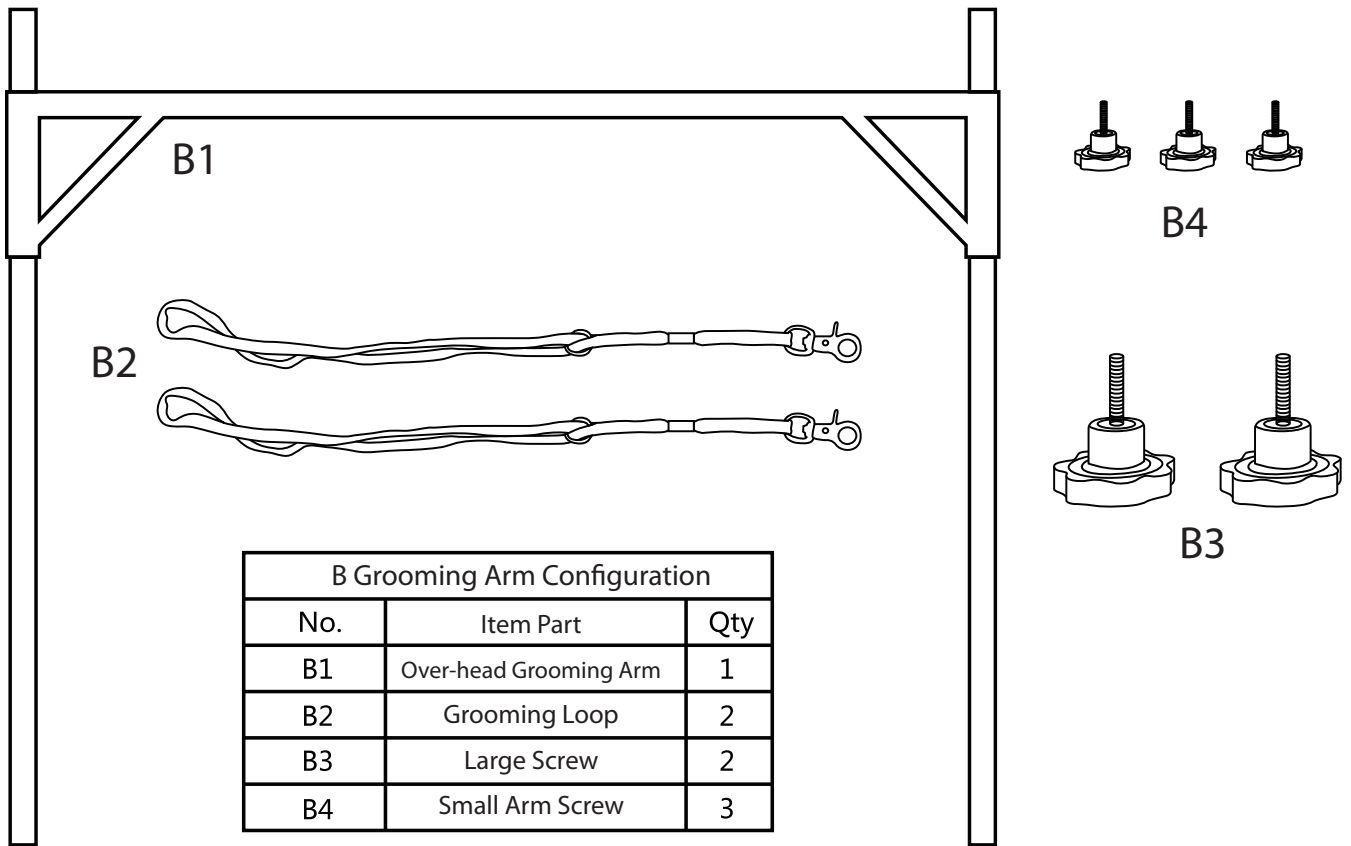


⑦



⑩





Accessories Installation & Instructions

Cable installation

Plug the cable socket into the transformer and then plug in.



Use of foot pedal



Step on the Left Foot Pedal to raise the table top. Step on pedal again to stop the table top at the desired height.



Step on the Right Foot Pedal to lower the table top. Step on pedal again to stop the table top at the desired height.

Accessories Installation Instructions

Over-head grooming arm installation

Insert each pole end of overhead arms into the arm bracket and secure by tightening the Large Screw. Keep both end poles at the same height.



Slide open the horizontal overhead arm to match the same distance as the vertical pole ends.



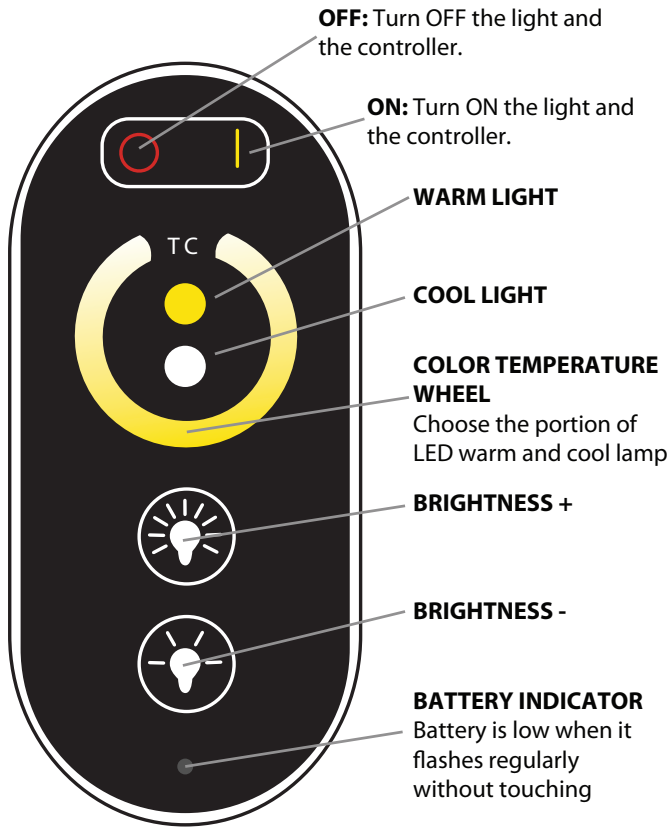
Keep the horizontal arm level consistent, then insert it into both sides of the vertical arm and lock the small screw.



Buckle harness to different hole position as per your needs.



Lighting Remote Control Instructions



SPECIFICATIONS

Remote Distance: <20M
 Operating Temp.: -20°C ~ 60°C
 Dimming Method: PWM
 Grey Steps: 256/CH
 Common Anode

REMOTE

Power Supply: 3 AAA Batteries (included)
 Standby Power
 Consumption: 0.05mW

RECEIVER

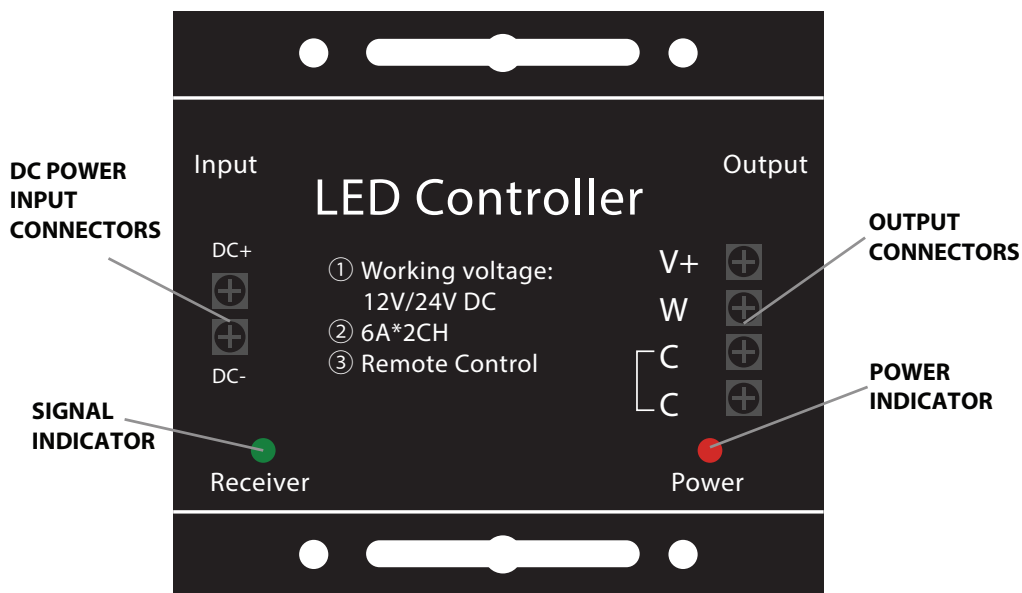
Input: DC 12V ~ 24V
 Output: Max 6A/CH, RGB 3CHs (Normal)
 Max 10A/CH, RGB 3CHs (Optional)

PAIR THE REMOTE TO A RECEIVER

- 1) Load the batteries into the remote
- 2) Connect LED to the receiver
- 3) Connect the receiver to the power supply

PAIR THE RECEIVER TO THE REMOTE

- 1) Switch off the main power supply to the receiver
- 2) Restore power, within 6 seconds simultaneously press the 'OFF' button and the 'BRIGHTNESS -' button for more then 2 seconds.
- 3) Once the LED flashes you have successfully paired
- 4) If the LED does not flash then repeat steps 1 & 2



TROUBLESHOOTING

CAUTION:

- 1) Do not expose the component of this product to direct moisture.
- 2) Do not expose the components of this product to excessively high temperatures.
- 3) Please keep out of reach of children.
- 4) Please consult your owner's manual if issues arise.
- 5) DO NOT mix alkaline, standard and rechargeable batteries.
- 6) DO NOT mix old and new batteries.
- 7) Exhausted batteries should be removed immediately from the remote
- 8) The supply terminals are not to be short-circuited.

| ISSUE | CAUSE | ACTION |
|--|---|--|
| No Light | <ol style="list-style-type: none"> 1. No power input to controller/LED 2. Wrong connection 3. Faulty power supply | <ol style="list-style-type: none"> 1. Check the P-supply to make sure it works well 2. Check the wire connection 3. Check the controller status and make sure it's powered |
| Remote not responding | <ol style="list-style-type: none"> 1. Low battery 2. Distance between remote and receiver is out of range | <ol style="list-style-type: none"> 1. Change the batteries 2. Move the remote closer to the receiver |
| Remote response delay | <ol style="list-style-type: none"> 1. The wire connecting the LED to the controller is too long 2. The wire is too thin 3. The power is overloaded | <ol style="list-style-type: none"> 1. Shorten the wire connecting the LED to the controller 2. Updated to a thicker wire 3. Add power amplifier/repeater in the middle of the strip |
| Different brightness between head and tail of LED strip | <ol style="list-style-type: none"> 1. The wire connecting the LED to the controller is too long 2. The wire is too thin 3. The power is overloaded | <ol style="list-style-type: none"> 1. Shorten the wire connecting the LED to the controller 2. Updated to a thicker wire 3. Add power amplifier/repeater in the middle of the strip |
| Signal chaos between remote and receiver | <ol style="list-style-type: none"> 1. Another remote control is paired 2. Another RF Source is working | <ol style="list-style-type: none"> 1. Pair the remote to the receiver 2. Try to close the RF source or move the RF source further away |

LIMITED WARRANTY

This Master Equipment® Radiance II LED Electric Grooming Table is warranted against defective material or workmanship for one year from date of purchase. Any Master Equipment® product that is determined to be defective in materials or workmanship during the warranty period will be replaced without cost to the purchaser for parts. Please contact Boss Pet Products Customer Service at 1-800-638-5754 regarding any defective product. Boss Pet Products will not be liable for any incidental failure or malfunction of this product caused by normal wear, abuse, misuse, unauthorized adjustment, or repairs. Boss Pet Products will not be liable for any incidental or consequential damages of any type. Any implied warranty is limited to the one-year period provided for in this expressed warranty. Due to the nature of glass, glass tabletop cannot be warranted. Some states do not allow limitations on how long an implied warranty lasts or exclusion or limitation of incidental or consequential damages, so the above limitations or exclusions may not apply to you. Warranty is void if product has been modified in any manner, repaired by anyone other than Boss Pet Products or has been subject to unreasonable use. Warranty is valid in the United States.

Master Equipment Products are built to the highest standards. Ask our team for more information about what parts and components are covered by warranty.

The below items can be replaced under one-year limited warranty

| MATERIAL # | DESCRIPTION |
|------------|------------------------------------|
| TP1201 17 | ME LED Table Actuator Lift |
| TP1222 17 | ME LED Table Leg Levelers |
| TP1803 17 | ME LED Table Remote Control |
| TP2068 17 | ME LED Table Transformer |
| TP3154 17 | ME LED Table Electric Power Cord |
| TP6160 17 | ME LED Table Pedal Control |
| TP2083 87 | ME LED Table Overhead Grooming Arm |

Date Purchase: _____



Manufactured for

© Boss Pet Products, Inc., Danvers, MA 01923
MADE IN CHINA

TP8296 47 87 Master Equipment®
Radiance II LED Electric Grooming Table

REV. 3/24