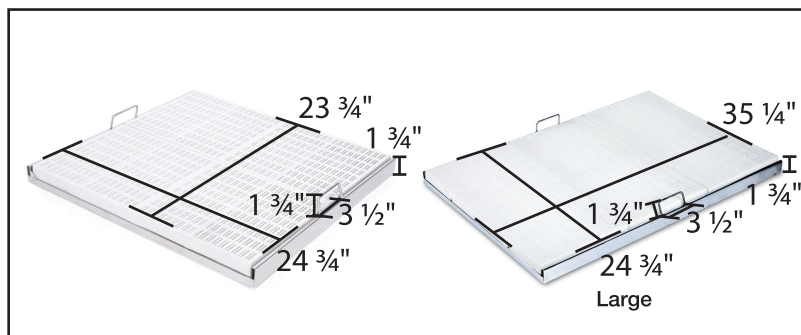
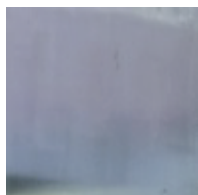


# TP9375 60 11 & TP9375 60 12

## Master Equipment® Stainless Steel Walk-in Tub

Tub Racks

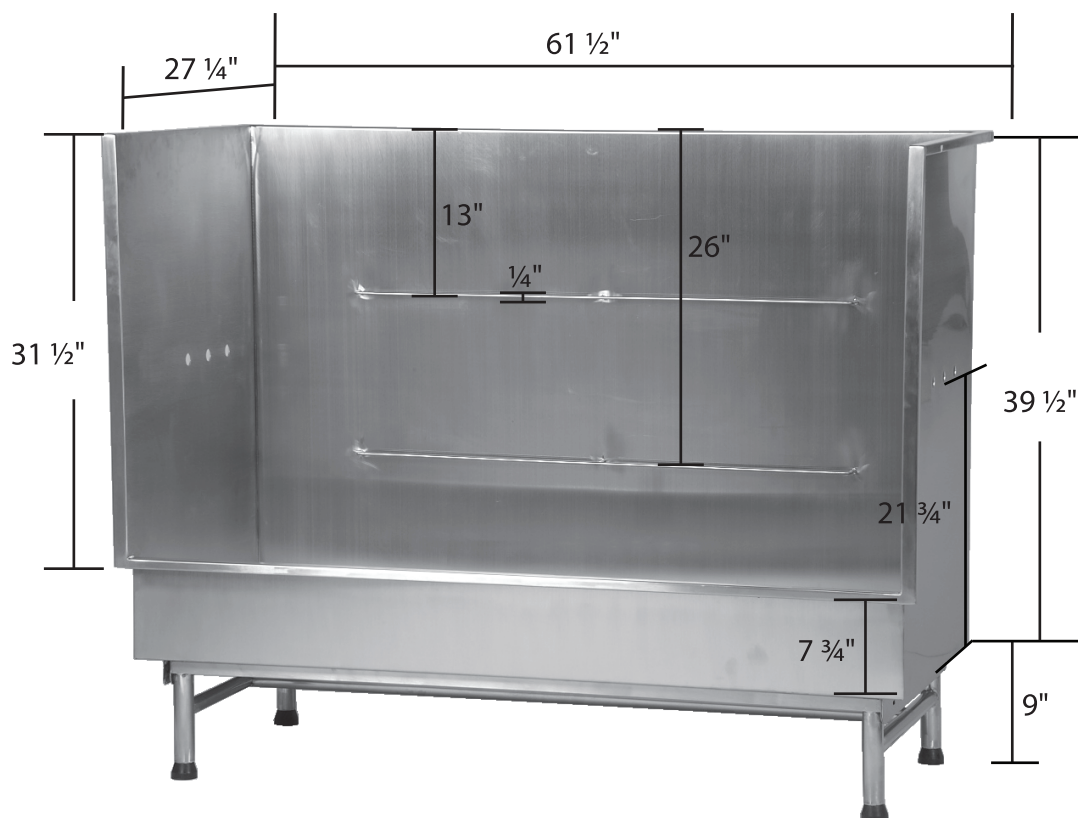


### Accessories Included:

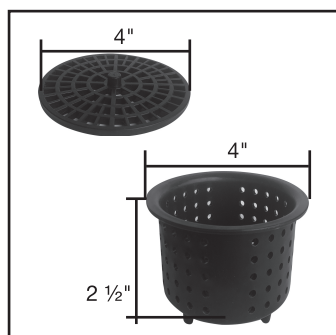
- Tub Racks (2)
- Drain Basket and Cover
- Leg Levelers (4)
- Drain Hose

### Materials & Color:

- **Tub Basin:** Type 304 Stainless Steel, 14 gauge, 2mm thick.
- **Backsplash:** Type 304 Stainless Steel, 14 gauge, 2mm thick.
- **Tub Legs:** Type 304 Stainless Steel, 19 gauge, 1mm thick. Feet are black rubber.
- **Grooming Bars:** Type 304 Stainless Steel, 9 gauge, 4mm thick.
- **Tub Racks:** Grates are white polyethylene. Frame is type 304 Stainless Steel, 19 gauge, 1.1 mm thick.
- **Tub Drain:** Tub drain is type 304 Stainless Steel. Drain basket is type 304 Stainless Steel, 26 gauge, 0.5mm thick. Drain cover is type 304 Stainless Steel, 20 gauge, 1mm thick. Waterproof ring is black polyurethane. Slip nut is polyethylene.
- **Drain Hose:** Hose length is 6 3/4", outside diameter is 1 3/4", and inside diameter is 1 1/2". Hose is black polypropylene. Clamp is aluminum.



Drain Basket and Cover



Drain Hose



Length: 80" - 82 3/4"

### Drain & Plumbing:

- **Drain:** 4 3/4" predrilled drain hole. Center of drain from the front wall 12 1/2", center of drain from back wall 12 1/2", center of drain from side wall 11 3/4".