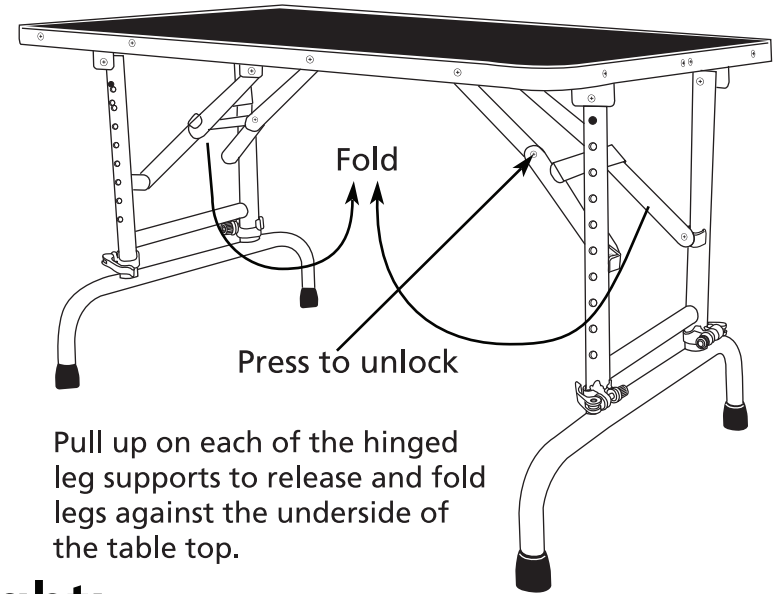
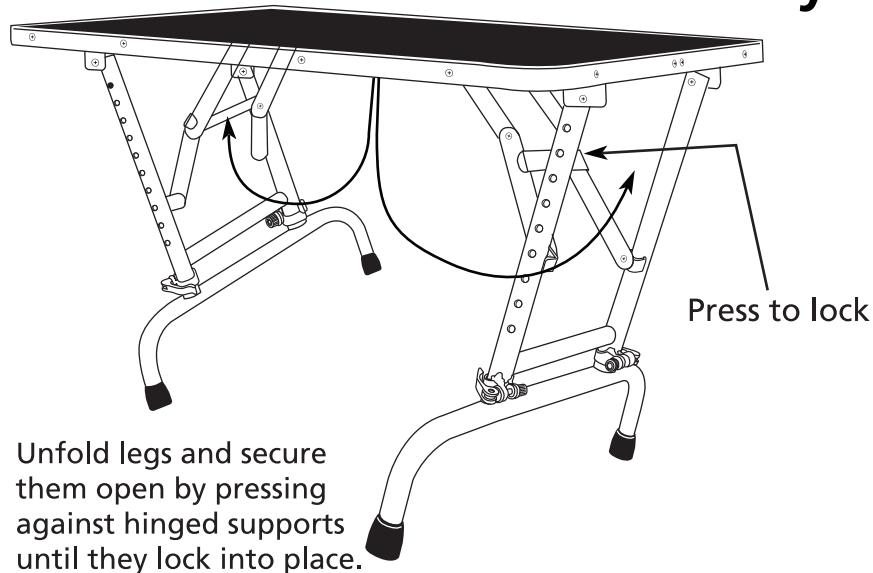
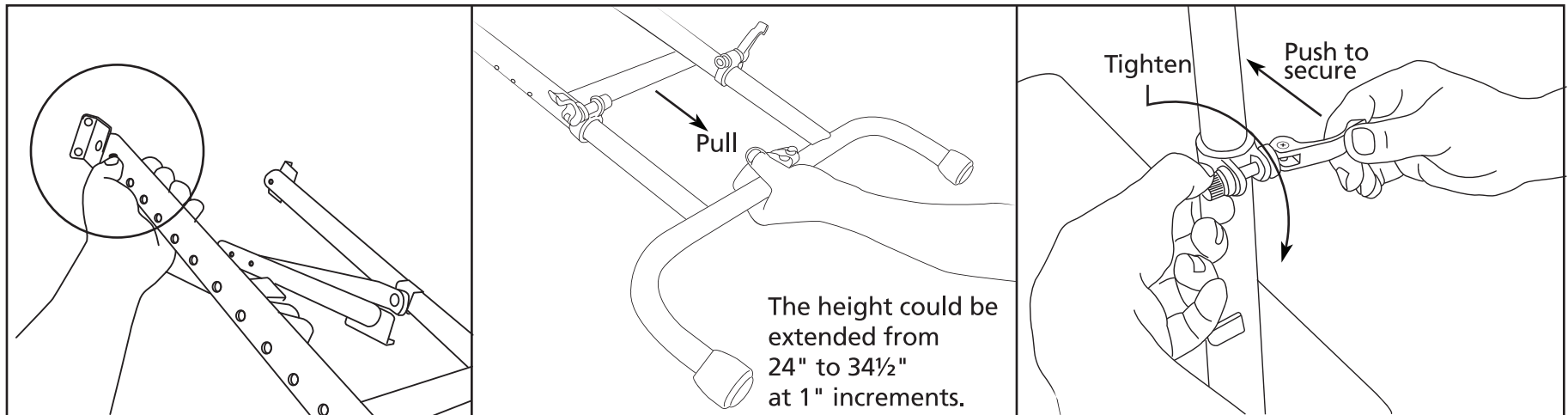


Assembly and Disassembly



To Adjust Height:



Depress locking pin on outside of leg to release

Grasp leg base and pull to extend leg to desired height. Make sure locking pin is secured in on the length adjustment holes.

Fasten legs in place by tightening tension screws on the locking clamps at the base of each leg and push clamp lever down to secure.

Reorder #TP698

Manufactured for / Fabricado para / Fabriqué pour
© Tops Pet Products, Beverly, MA 01915
Manufactured in / Fabricado en Taiwan / Fabriqué en Taiwan